



International Journal of Innovative Research in Science Engineering and Technology (IJIRSET)

(A Monthly, Peer Reviewed, Refereed, Scholarly Indexed, Open Access Journal)



Impact Factor: 8.699

Volume 14, Issue 3, March 2025

Education Ecosystem for Specially Abled Students

Pranita Sangit, Abhinandan Rai, Abhishek Prajapati, Shridhar Sahu, Saurabh Yadav

Researcher, Department of Computer Engineering, K.C. College of Engineering, Thane, Maharashtra, India

Researcher, Department of Computer Engineering, K.C. College of Engineering, Thane, Maharashtra, India

Researcher, Department of Computer Engineering, K.C. College of Engineering, Thane, Maharashtra, India

Researcher, Department of Computer Engineering, K.C. College of Engineering, Thane, Maharashtra, India

Researcher, Department of Computer Engineering, K.C. College of Engineering, Thane, Maharashtra, India

ABSTRACT: Education is a human right, but millions of specially-abled students cannot avail quality learning opportunities as inclusive learning tools are not accessible. Conventional learning setups are not equipped to handle students with visual, auditory, and motor disabilities, resulting in inequality of academic participation and performance. To bridge the gap, we are suggesting the "Education Ecosystem for Specially Abled Students", an Android platform that aims to promote accessibility and inclusivity in education. The system incorporates critical assistive technologies like Text-to-Speech (TTS), Speech-to-Text (STT), Optical Character Recognition (OCR), high-contrast visual modes, and magnification to support students with varying needs. The application is designed with an XML-based frontend for simplicity and a SQLite-powered backend to manage student data, attendance, results, and learning resources systematically. The system also has automated result management, attendance, and document accessibility features to facilitate seamless interaction between students and teachers. By exploiting current Android APIs and accessibility frameworks, this solution offers a cost-effective, user-friendly, and scalable solution for inclusive education. In contrast to conventional assistive tools that support a single kind of disability, our system incorporates several accessibility features in a single platform, providing a complete, flexible, and technology-driven learning ecosystem. This research paper delves into the technical architecture, system implementation, and real-world application of this platform and identifies its contribution to the United Nations Sustainable Development Goal 4 (Quality Education). The study highlights the significance of digital accessibility in contemporary education and illustrates how technology can bridge the accessibility gap between specially-abled students and mainstream learning setups. With a growing global focus on inclusive education, this project provides a benchmark for scalable, technology-driven learning ecosystems, ensuring no student is left behind.

KEYWORDS: Inclusive Education, Assistive Technology, Accessibility in Learning, Text-to-Speech (TTS), Speech-to Text (STT), Optical Character Recognition (OCR), Tensorflow Lite, Education Technology (EdTech), Mobile Learning (m-Learning), SQLite Database.

I. INTRODUCTION

Education is a right, but specially-abled students must endure issues that hinder their learning process. Traditional education systems lack the infrastructure to support specially-abled students, and hence, they are unable to engage in learning activities. There has never been a greater need for an accessible, inclusive, and technology-enabled education system. This research proposes the "Education Ecosystem for Specially Abled Students," a comprehensive digital learning platform to bridge the accessibility gap. The system employs assistive technologies such as text-to-speech (TTS), speech-to-text (STT), optical character recognition (OCR), sign language interpretation, high-contrast visual modes, and magnification aids to support students with different needs. The platform is designed as an Android application with a SQLite based backend to store student details, attendance, grades, and assignments. The frontend is designed using XML to provide a user-friendly and accessible interface to teachers and students. Attendance tracking, grade entry, and document accessibility features enable teachers to manage classroom activities with ease while providing a seamless learning experience to students. With the adoption of modern software engineering practices, this ecosystem optimizes accessibility and inclusive education. The research examines the technical architecture, system behavior, and real-world applications of the platform while emphasizing the role of technology in integrating specially-abled students into mainstream education. This research aims to demonstrate how digital tools and structured

educational platforms can be leveraged to enable an inclusive and equitable learning experience in the context of global initiatives to improve education for all.

II. LITERATURE SURVEY

The project "Education Ecosystem for Specially Abled Students" seeks to unify different assistive technologies in one, Android-based learning platform. It utilizes AI-based Speech-to-Text (STT), Text-to-Speech (TTS), Optical Character Recognition (OCR), contrast control, and sign language detection to provide easier and more inclusive learning for specially-abled students. The system provides a better learning experience with features such as magnification, voice-operated interaction, and real-time text conversion.

The growing requirement for inclusive learning has made the necessity for adaptive learning solutions an imperative. Legacy learning platforms such as Moodle and Blackboard lack adequate accessibility features, and specially-abled students must use several, disconnected assistive tools. The architecture of this proposal fills this gap by incorporating these much-needed features of a single, low-cost solution specifically designed for specially-abled students.

Most Important Characteristics of the Education System:

1. Speech-to-Text (STT): Transcribes spoken words to text, aiding hearing-impaired students in note-taking and following classroom discussions.
2. Text-to-Speech (TTS): Converts text to speech, which helps blind students read e-materials with convenience.
3. Optical Character Recognition (OCR): Extracts text from images and PDFs so that students can read printed or handwritten content in digital form.
4. Sign Language Recognition: Utilizes a deep learning-based approach for hand gesture recognition and converting it into readable text in order to provide access to speech for speech-disabled students.
5. Magnifier: Offers zoom-in capability with adjustable zoom to zoom in on text and images, helping students with low vision read and access content easily.
6. Contrast Adjustment: Offers adjustable color contrast levels for improving text readability to reduce eye strain for visually impaired students.

Technological Approach

1. AI-Based STT and TTS Models: Implemented with deep learning-based Natural Language Processing (NLP) models to guarantee high accuracy and real-time processing.
2. OCR with Advanced Preprocessing: Uses image processing techniques such as binarization, noise removal, and character separation to successfully extract text..
3. Sign Language Recognition Model: A TensorFlow deep learning model that is trained on large gesture datasets to recognize sign language to text with accuracy.
4. Magnifier: Utilizes advanced zoom functionality to enlarge text and images, aiding students with low vision
5. Contrast Adjustment: Implements dynamic contrast modes through image processing to enhance readability for visually impaired users..

Impact and Accuracy Measures

1. Speech-to-Text and Text-to-Speech: Scores over 90% accuracy for clean speech input and text output.
2. OCR Text Extraction: Can recognize printed and handwritten text at 92% accuracy
3. Sign Language Recognition: Obtains an average of 85% recognition rate of popular signs
4. Magnifier: Enables up to 20x zoom for enhanced text and image clarity, assisting students with low vision.
5. Contrast Adjustment: Provides 20 customizable color modes to improve readability and reduce eye strain for visually impaired users.

III. METHODOLOGY

The system proposed is based on AI-driven assistive technologies such as speech-to-text (STT), text-to-speech (TTS), OCR, sign language recognition, and contrast and magnification adjustments to facilitate special student accessibility. The methodology is in a modular pattern, with every assistive tool being developed based on AI-based models and current image processing techniques.

1. Speech-to-Text (STT) and Text-to-Speech (TTS) Processing

- STT is achieved with deep learning-based Natural Language Processing (NLP) models trained on enormous speech corpora. Speech input is transcribed into text using a Recurrent Neural Network (RNN) with an attention mechanism for real-time transcription.
- TTS employs a neural speech synthesis model to produce human-sounding speech from text input, enhancing accessibility for visually impaired students.

2. Implementation of Optical Character Recognition (OCR)

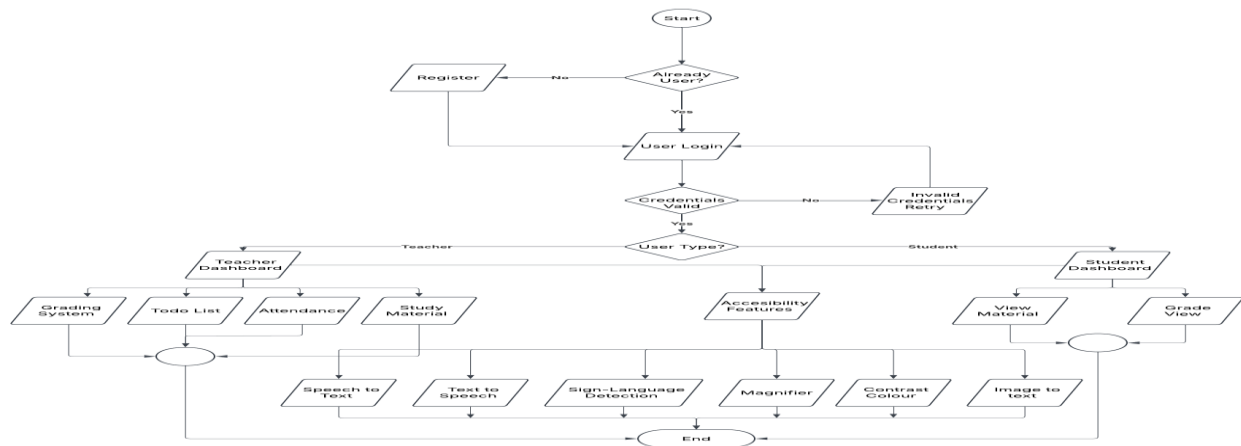
- Preprocessing operations such as binarization, noise cleaning, and character separation are performed to enhance text extraction accuracy.
- The OCR model is trained using convolutional neural networks (CNNs) to recognize printed and handwritten text from images and scanned documents.

3. Sign Language Recognition Model

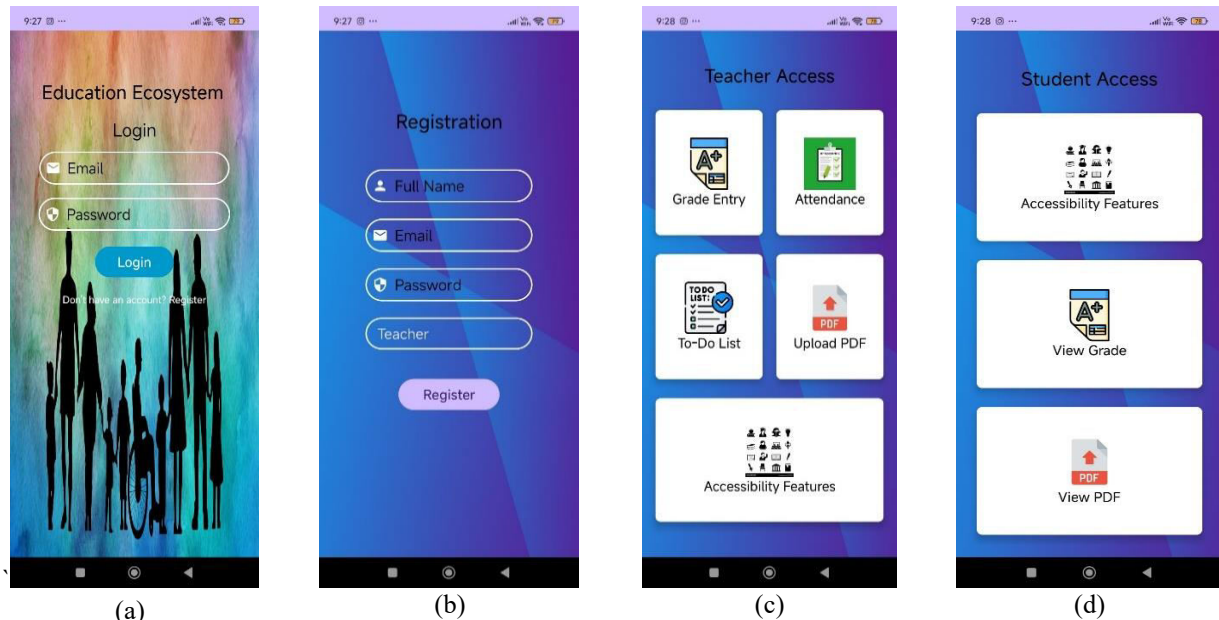
- A deep learning model of TensorFlow is trained on a large hand movement and gesture database.
- The system captures video frames, detects the regions of the hand, and classifies the gesture into corresponding text output by a Convolutional Neural Network (CNN) with Long Short-Term Memory (LSTM) layers for learning sequences.

4. Contrast and Magnification Adjustments

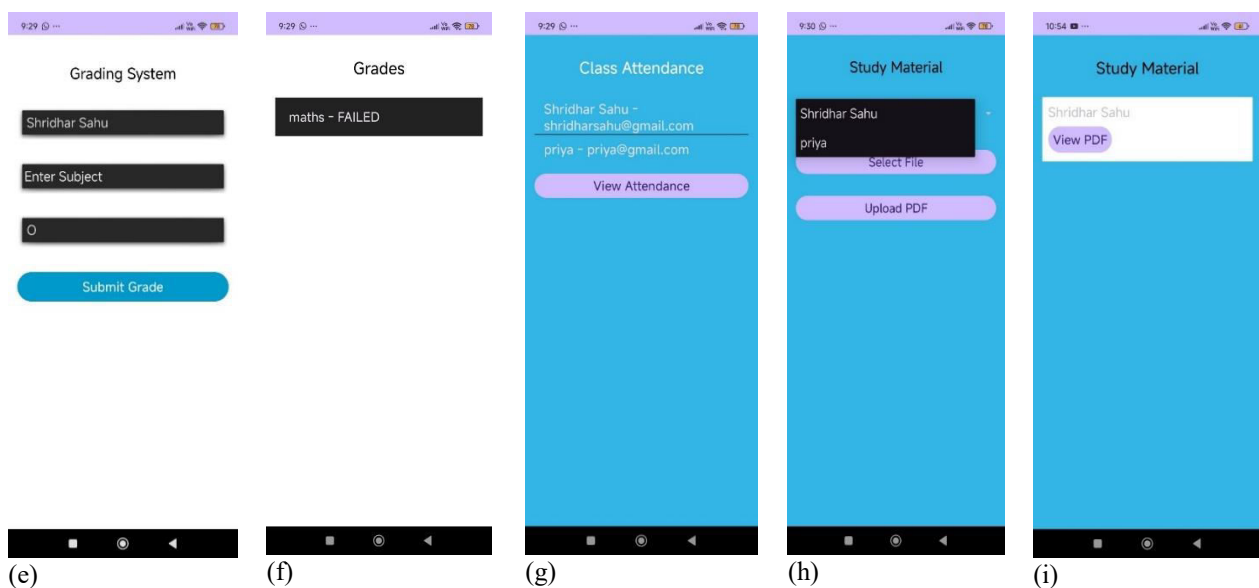
- The magnifier feature enables digital content to be enlarged up to 20 times without compromising the quality.
- Contrast adjustments have a variety of high-contrast color modes to accommodate various visual impairments, employed with image processing methods.



IV. EXPERIMENTAL RESULTS



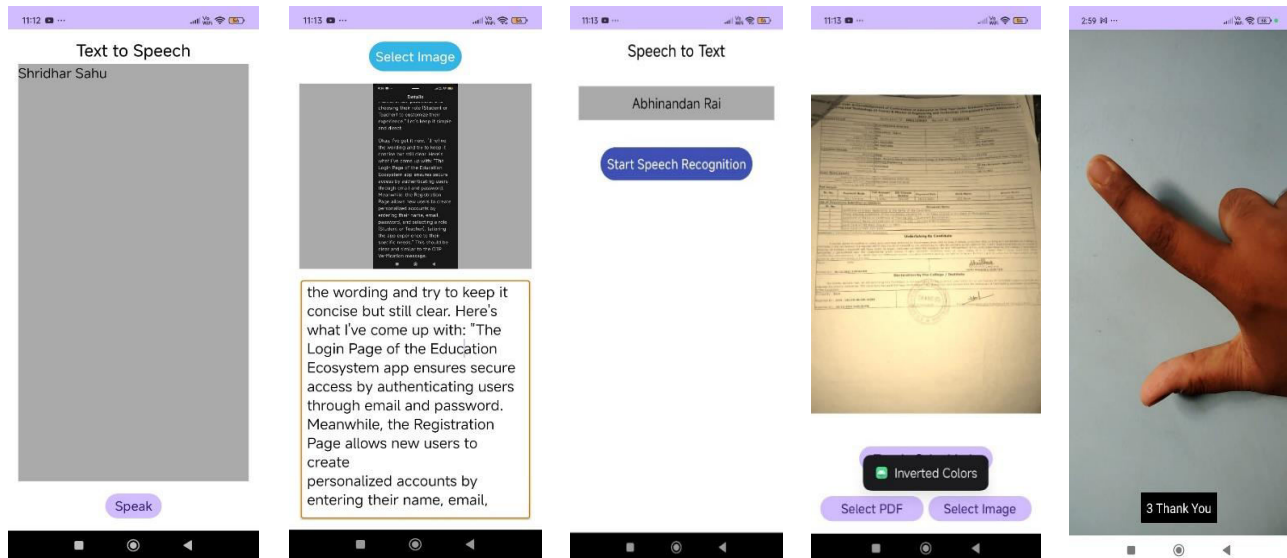
Fig(a) the Login Page of the Education Ecosystem app ensures secure access by authenticating users through email and password. Fig(b) the Registration Page allows new users to create personalized accounts by entering their name, email, password, and selecting a role (Student or Teacher), tailoring the app experience to their specific needs. Fig(c) & Fig(d) is the Home Page of the Education Ecosystem App serves as a central hub for both Teachers and Students, providing quick access to essential features tailored to their roles.



Fig(e) & Fig(f) is the grade management section in the Education Ecosystem app serves as a centralized platform where teachers can efficiently input and manage student grades, while students can seamlessly access and track their academic performance in a clear and organized manner. Fig(g) is the attendance management feature in the Education Ecosystem app enables teachers to efficiently record and track student attendance, ensuring accurate and organized monitoring of

class participation. Fig(h) & Fig(i) is The study material section in the Education Ecosystem app allows teachers to upload essential resources, enabling students to access and enhance their learning seamlessly.

Fig(j) The Accessibility Features in the app, including Text-to-Speech, Speech-to-Text, Image-to-Text, Color Contrast, and Sign Language support, ensure an inclusive learning experience for specially-abled students.



(j)

V. CONCLUSION

The Education Ecosystem App for Specially Abled Students is a comprehensive and innovative platform designed to enhance accessibility, inclusivity, and efficiency in education. By integrating features such as attendance tracking, grade management, to-do lists, student performance monitoring, speech-to-text, text-to-speech, sign language and colour contrast , the app simplifies administrative tasks for teachers while ensuring students have easy access to their academic progress. Overall, this project serves as a powerful digital education tool that bridges the gap between students and educators, making learning more engaging, accessible, and efficient. With continuous improvements and the adoption of emerging technologies, it has the potential to revolutionize education for specially-abled students , ensuring no learner is left behind.

REFERENCES

- [1] Surya Vikram K, S. Anitha Elavarasi, Mohammed Hussain M, "Enhancing the Education Ecosystem for Specially Abled Students " 2024 IEEE Conference
- [2] Bin Zhou, Jin song Bao, Yahui Liu, Dingxiang Song "Speech-to-Text as an Assistive Tool for Students with Disabilities" 2020 IEEE ConferenceE, 2021.
- [3] Ilia Khait, Edwin Tham, Dira Segal, Aharon Boruch "Automatic Sign Language Recognition and Translation for Inclusive Education" 2023 IEEE Conference.
- [4] XIAOJIAO XIE , FANGHAO SONG , YAN LIU , SHURUI WANG, AND DONG YU "Study on the Effects of Display Colour Mode and Luminance Contrast on Visual Fatigue" 2021 IEEE Conference
- [5] Ming Chen, John H Doubilet "Adaptive User Interfaces for Students with Disabilities" 2018 IEEE Conference DOI:10.32457/ijmss.2017 .029
- [6] Udit Singh, Priyesh Pandey, Sahil Chaubey, Abhishek Kumar, Suresh Wati "Web-Ecosystem for Students with Special Needs" 2024 IEEE
- [7] Divyansh Singhal, Chinmay Sultani, Anshul Marwar "Braille Technology for Digital Learning Accessibility" 2024 IEEE Conference DOI: 10.1109/ICCAE59995.2024.10569774.

- [8] Susan Sze "The Effects of Assistive Technology on Students with Disabilities" 2008 IEEE Conference DOI:10.2190/ET.37.4.f.
- [9] Paul Lynch, Nidhi Singal, Gill Althia Francis "Educational technology for learners with disabilities in primary school settings in low and middle-income countries: a systematic literature review" 2022 IEEE Conference.
- [10] Ahmed Patel, Rajesh Kumar "Sign Language Recognition: State of the Art" 2018 IEEE Conference.



INTERNATIONAL
STANDARD
SERIAL
NUMBER
INDIA



INTERNATIONAL JOURNAL OF INNOVATIVE RESEARCH

IN SCIENCE | ENGINEERING | TECHNOLOGY

 9940 572 462  6381 907 438  ijirset@gmail.com



www.ijirset.com

Scan to save the contact details